

# SMART YARN CATCHER

The ultimate solution to eliminate residual yarn accumulation on ring frame spindles



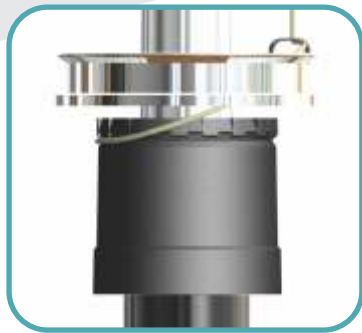
Accumulation of residual yarn on ring frame spindles at the end of every doff has been a perennial problem for the spinning industry. The accumulated residual yarn is not only a waste of material, but also needs to be manually cleaned, which involves many man-hours and also affects the productivity of the ring frames.

**No more accumulation of residual yarn – with the TeraSpin Smart Yarn Catcher**

Continuous innovation is TeraSpin's hallmark. TeraSpin has developed a Smart Yarn Catcher that is self-cleaning. The residual yarn left behind after every doff is expelled by centrifugal forces – putting an end to a major pain area in the operation of ring frames!

**Smart Yarn Catcher = No more residual yarn accumulation ⇒  
No more cleaning required ⇒ Saving in labour hours ⇒  
Better machine utilisation ⇒ Better ring frame productivity**





Smart Yarn Catcher closed – yarn gripped



Smart Yarn Catcher open – yarn released

The TeraSpin **Smart Yarn Catcher** addresses the need of spinners for a user friendly yarn clamping device on every ring frame spindle.

#### Features

- Automatic opening & closing of clamping faces with change in spindle speed
  - Clamping faces open at about 10500 rpm
  - Clamping faces close at about 4000 rpm
- Firm grip of yarn between upper & lower clamping faces which can align precisely with each other due to unique mechanism
- Special cutter for yarn cutting

#### Benefits

- **Minimum yarn used for clamping**
- **No accumulation of residual yarn** – the flat annular clamping faces enable the clamped yarn to move out of device easily by centrifugal forces
- No cleaning of residual yarn – less labour hours
- Reduced start-up breaks
- Improved ring frame productivity
- Very long service life

<b>Full cop</b>	<b>Under winding</b> takes place at 4000 rpm	<b>Machine stopped</b> Below 4000 rpm yarn is clamped	<b>Tube removal</b> Yarn gets cut during tube removal	<b>Starting of new doff</b> Yarn remains clamped up to 10500 rpm	<b>Spinning</b> Yarn clamped during previous doff gets released above 10500 rpm

#### A.T.E. ENTERPRISES PRIVATE LIMITED

(Business Unit: TeraSpin)

E: [sales@teraspin.com](mailto:sales@teraspin.com)

W: [www.atigroup.com/teraspin](http://www.atigroup.com/teraspin)

CIN: U51503MH2001PTC132921